

# BANISTER PLACE

3809 S. 2ND STREET, STE. D-100 | AUSTIN, TX 78704

OFFICE | LEASE



## LEASING INFORMATION

**NICK TRIOLA**

512.441.1062

[NICK@KPGCOMMERCIAL.COM](mailto:NICK@KPGCOMMERCIAL.COM)

# BANISTER PLACE

OFFICE | LEASE

3809 S. 2ND ST., STE. D100 | AUSTIN, TEXAS 78704

## ✓ AVAILABILITY

**BUILDING D**

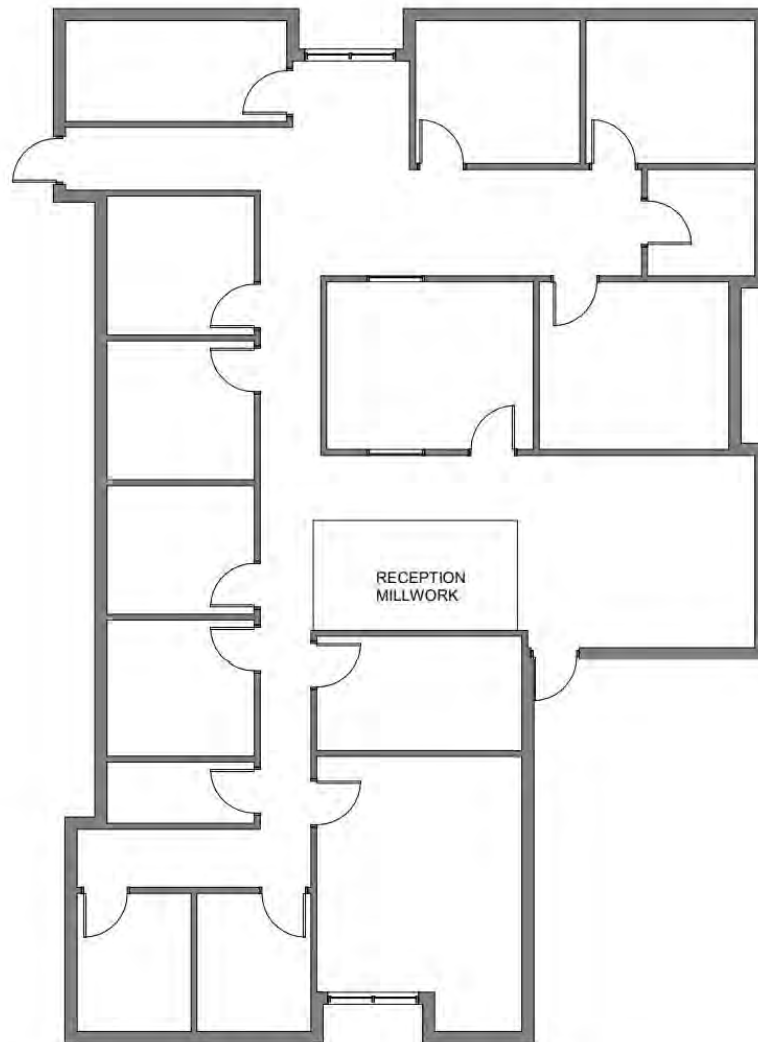
**SUITE 100-2680 RSF**

\* RENTABLE SQUARE FEET

## 💰 LEASE TERMS

RATE: STARTING AT \$16.00/RSF + NNN (est. \$10.53)

TERM: 2-3 years



Suite D-100  
Existing Floor Plan

## LEASING INFORMATION

NICK TRIOLA

512.441.1062

[nick@kpgcommercial.com](mailto:nick@kpgcommercial.com)



The information contained in this offering material ("Summary") is confidential, furnished solely for the purpose of the review by a prospective purchaser of the Property and is not to be used for any other purpose or made available to any other person without the express written consent of KPG Commercial, Broker. The material is based in part upon information supplied by the owner of the Property ("Owner") and in part upon information obtained by KPG Commercial, Broker from sources it deems reliable. Summaries of any documents are not intended to be comprehensive or all inclusive but rather only outlines of some of the provisions contained herein or as to engineering or environmental matters. Prospective purchasers should make their own projections and conclusions without reliance upon the material contained herein and conduct their own independent due diligence, including engineering and environmental inspections, to determine the condition of the property and the existence of any potentially hazardous material used in the construction or maintenance of the building or located on site.